

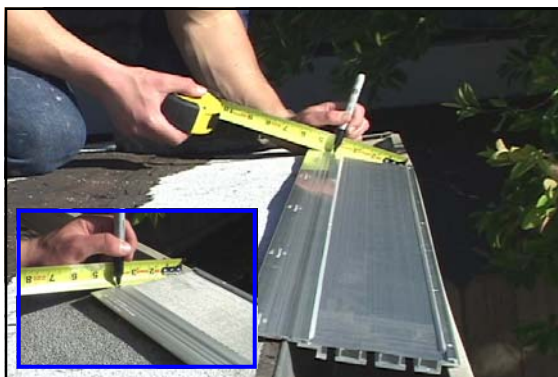
INSTALLING GUTTERGLOVE ON A FLAT ROOF or a Flat Patio Deck

The rigidity of Gutterglove allows it to be installed on any flat roof or flat patio decking. The procedures described in this installation technique are for a flat roof, but are identical to the patio deck as well. These procedures are also the same as the installation technique for Stone Coated Steel.

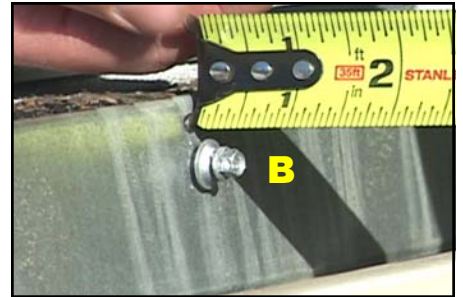


1. The back wing rests over the roof portion (Insert A.).

If this wing is not removed, debris will get trapped between the wing and the roof. Also if the wing isn't removed, water could puddle on the roof because the wing is blocking the flow of water to the gutter.



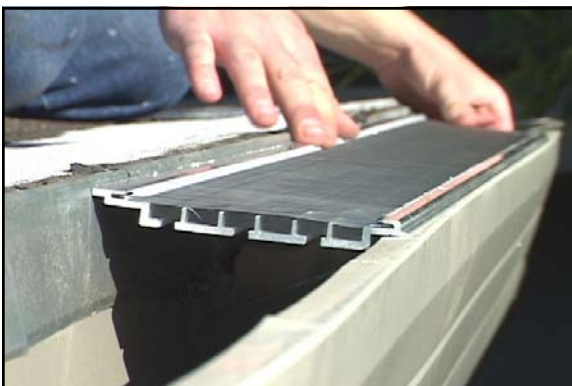
2. Place Gutterglove over the gutter and mark the point where it touches the roof. Mark both ends with a black felt pen.
3. Trace a line between both pen marks. You can use another piece of Gutterglove as a straight edge to make the line.
4. Carefully cut off the back wing.



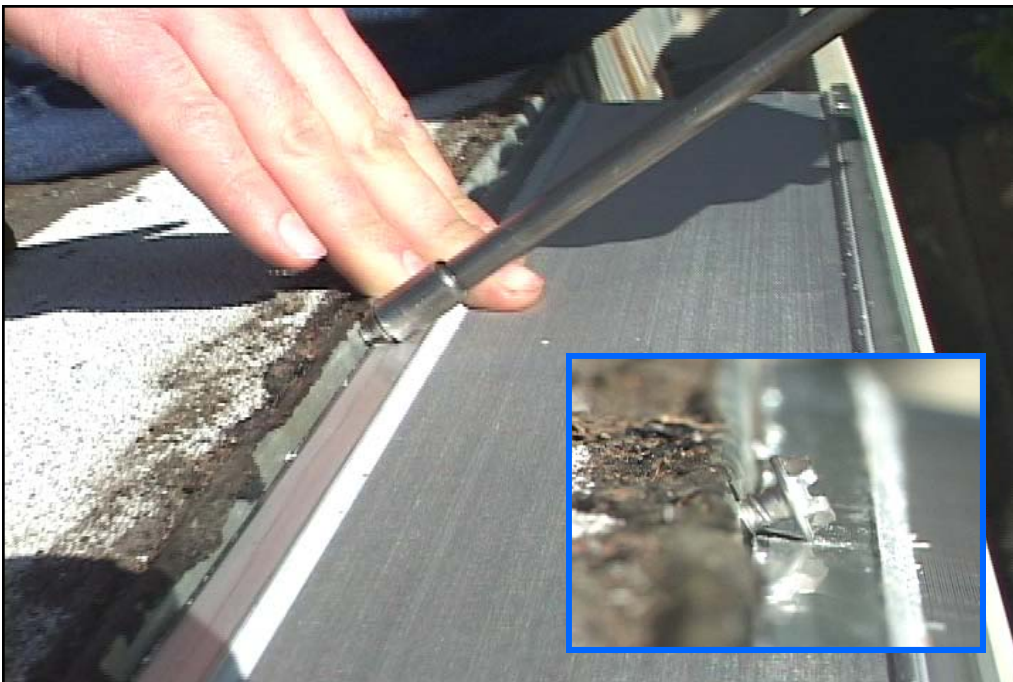
5. Drill two screws in the back of the fascia for holding up the piece of Gutterglove you just cut. You may also use three screws in the back if you wish. Leave the screws about 1/2 of an inch backed out (Insert B). Gutterglove should be able to rest more than adequately on this.



6. Two screws for supporting Gutterglove.



7. Gutterglove rests neatly on top of the gutter and about 1/4 inch lower than the roof.



8. Drill two screws into the upper portion of the fascia to assist in holding down Gutterglove.



9. Apply caulk in the back edge between Gutterglove and the roof.



10. Drill in three screws in the front. This procedure can be performed before the caulking step in number 9 above if you wish. That's all there is to it.